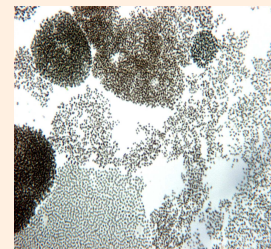
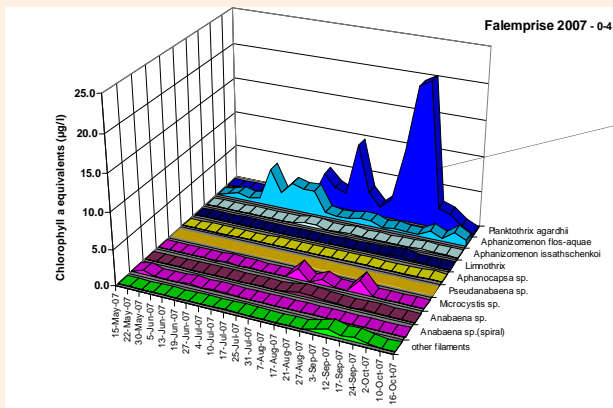


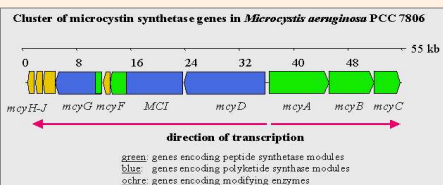


B-BLOOMS 2 : Approaches, tasks and partners



Phytoplankton analysis

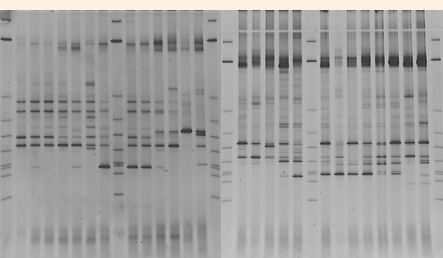
FUNDP, UGent, VUB



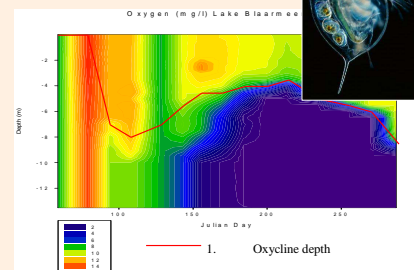
- Microcystin genes detection

Molecular analysis

ULg, UGent



- DGGE banding patterns
- Cultures and clone libraries



Environmental conditions

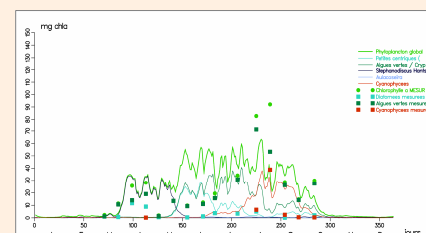
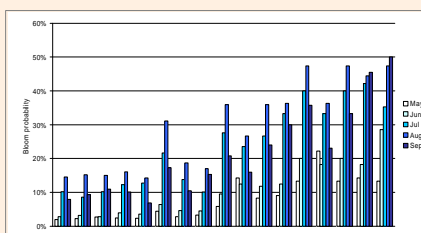
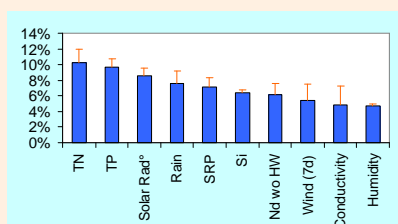
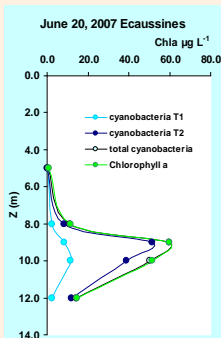
FUNDP, UGent, VUB

Toxin analysis

Risks management

Univ. Dundee, FUNDP

Data processing and modelling



Contribution of environmental variables to blooms

FUNDP

Statistical prediction models

VUB

Simulations of management measures

ULg Aquapôle

